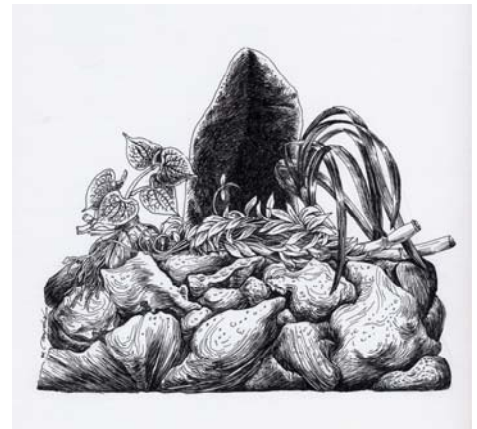


# ‘Aha Kāne 2006

## Native Hawaiian Men’s Health Conference

*Inā pa‘a ‘ole ka pohaku kihi, hāule ka paia.*  
*If the corner stone is not set properly, the wall shall collapse.*



ADVISORY: June 24, 2006

Contact: Kim Ku‘ulei Birnie, (808) 383-1651

### HAWAIIAN MEN ADDRESS THEIR ROLES AND RESPONSIBILITIES

(Kapālama, O‘ahu). More than 640 Hawaiian men are gathering this weekend at the first ever ‘Aha Kāne 2006, the Native Hawaiian Men’s Health Conference, on the Kapālama Campus of the Kamehameha Schools.

“It’s time for kāne (men) to understand what their kuleana—roles and responsibilities—are in order to foster healthy relationships, healthy families, and a more pono society,” says Kamana‘opono Crabbe, the conference convenor. “It goes back to the conference theme, *Inā pa‘a ‘ole ka pohaku kihi, hāule ka paia*. If Hawaiian men are not clear about who they are and what their responsibilities are, the high rates of disease and all our socio-economic indicators will prevail.”

Keynote speakers to date have included Richard Paglinawan, a retired social worker and cultural practitioner, talking about the historical context of men in traditional Hawaiian and modern society. Judge Thomas Kaulukukui, Jr. spoke to the men about leadership and how it’s possible to integrate Hawaiian values and beliefs in the modern world. Earl Kawa‘a, a Moloka‘i-born social worker and farmer, engaged the attendees in recognizing men’s roles through song.

Throughout the conference, health screening stations are available to test participants for blood pressure, blood sugar levels, cholesterol, body fat analysis and more. Cigarette smokers are counseled to stop or reduce their use. Attendees also have opportunity to ask Hawaiian physicians questions about their health.

Sunday is the last day of the ‘aha (gathering). Morning speakers and presentations will be followed by cultural competitions from 12:30 – 3:00 PM:

- Haka Moa. Chicken fights between individuals
- Lono-Maka'īhe. Throwing traditional spear and being rated for accuracy and distance
- Hukihuki. Tug-of War between teams of five members.
- Hāpai Pōhaku. Contestants raise four progressively larger boulders leading up to the proverbial naha stone
- Pa'i'ai Kalo. Entrants pound 20 lbs. poi and are evaluated for consistency and taste of fresh poi.

Male reporters are invited to attend the conference. Invitations are not transferable to others in your organization without prior approval. A program and other details may be found at [www.ahakane.org](http://www.ahakane.org).

*The conference is organized by Ka Papa Komike Kumakua and sponsored by the Office of Hawaiian Affairs, the Kamehameha Schools, Papa Ola Lōkahi, the Queen Lili'uokalani Trust, the Department of Native Hawaiian Health and others.*

*Papa Ola Lōkahi, founded in 1988, is recognized by the Native Hawaiian Health Care Improvement Act to improve the health and well-being of Native Hawaiians.*

# # #